

# THUNDER

*Connection to your Weekend Escape*

## THUNDER CAM



**CAPTURE YOUR  
ADVENTURE WITH THE  
THUNDER ACTION SPORTS CAMERA**

# The Thunder Difference

Thunder helps take you places you've never been before, making adventure more affordable and accessible for up and coming 4WD enthusiasts.

Designed for the working adventurer, Thunder products have been tested and developed to handle anything you can throw at them without breaking the bank.

Capture and relive your adventures and weekend getaways with a high definition, adaptable sports action camera. Boasting 1080P, WiFi connectivity for iOS and Android, USB/HDMI connections, 170° wide angle lens, multiple mounting brackets, 240 and 12 volt charging leads and a housing that's waterproof to 30 metres, the Thunder Cam offers everything you need to capture those unforgettable moments.

Using a 32GB micro SD card (not included) as its main memory source, you can even mount it upside down and run a loop program for use as an in-car dash camera.



WIFI CONNECTIVITY



FULL HD VIDEO



USB & HDMI



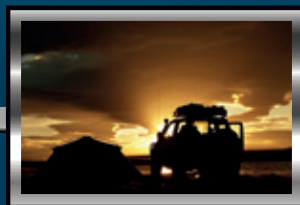
12MP STILL CAMERA



30M WATERPROOF



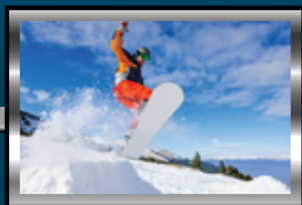
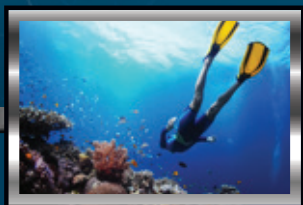
170° WIDE LENS



# Included Accessories and Mounting Options



						
Waterproof Housing	Handle Bar/Pole Mount	Suction Cup	Mount 1	Mount 2	Mount 3	Mount 4
						
Mount 5	Mount 6	Camera Clip	Multifunction Clip	Helmet Seat	Battery	3M Adhesives
						
USB Cable	240V Charger	12V Car Charger	Cleaning Cloth	User Manual		







# Product Information

## Specifications

- 170° HD wide-angle lens
- Wi-Fi enabled - Android & iOS
- Slot for micro SD card up to 32GB (card not included)
- Battery life - 70 minutes
- Detachable 900mAh battery (included)
- Dimensions - 30 x 60 x 40mm
- Weight - 44g (without battery) 58g (with battery)
- 12 month warranty

## Video

- 1920 x 1080P 30fps video resolution
- H.264 video compression format
- MOV video file format

## Photography

- 12 mega pixel CMOS-Image sensor
- 4032 x 3024 image resolution
- JPG image file format

## Additional Features

- Can be used for car dash camera (auto start/stop recording when charging/not charging) and great for movies, still shots and time lapse pictures.

**[thunderauto.com.au](http://thunderauto.com.au) // [thunderauto.co.nz](http://thunderauto.co.nz)**

